

# Allsteel®

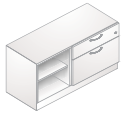
## Align™ Credenza



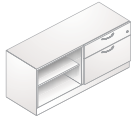
Expand your capability while complementing your style.

Premium details. Complete solutions. Align storage components enhance your workspace function and design. This versatile metal credenza makes the most of your space while offering a clean-lined aesthetic that integrates seamlessly into any setting. It multiplies your options, with the flexibility to support layered applications, or supplement worksurfaces and seating.

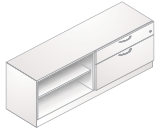
Box/Lateral/Open with Metal Shelf  
Left- and right-handed models available.



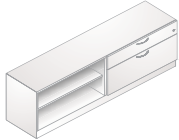
42" W



48" W



60" W



72" W

Open with Metal Shelf



24" W



30" W



36" W



42" W

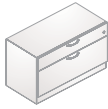
Box/Lateral



24" W



30" W



36" W

All credenzas are 22"H. Shelf models are 17¼"D and drawer models are 18"D.

## Align storage just opened up new possibilities.

### Function with style

- Quality, full-metal construction with finished top and back and durable welded case with drawers or shelves
- Choice of pull styles: arch, square, straight
- Plinth base design
- Paint options: Allsteel Core and Select paint colors
- Universal design coordinates effortlessly with Stride®, Terrace DNA®, and Optimize™

### Available options

- Cushion top
- Laminate top
- Storage-to-panel bracket (allows unit to attach to panel)
- Worksurface support stanchion for layered applications



 together now

We believe that we can make a real and lasting difference for our environment by designing relevant, durable, high-quality products that are guaranteed for years of use and reuse. For details, visit [allsteeloffice.com/alltogethernow](http://allsteeloffice.com/alltogethernow).

# Allsteel®

Allsteel Inc.  
Muscatine, Iowa 52761-5257  
[allsteeloffice.com](http://allsteeloffice.com)

©2014 Allsteel Inc.  
Allsteel, Stride and Terrace DNA are registered trademarks and Align and Optimize are trademarks. Indoor Advantage is a trademark of SCS Global Services. level is a registered trademark of BIFMA International.

Allsteel supports green initiatives in the contract furniture industry as a member of the U.S. Green Building Council. Align is an SCS Indoor Advantage™ Gold and level® 2 certified product.

