

# Case Study

**Industry**  
Software

**Workstations**  
60 (with 250 more in the future)

**Product**  
Terrace 2.6, Reach;  
Tolleson side chairs

**Opportunity**  
Additional workstations,  
additional employee  
interaction, more storage  
all in the same space.

## Color Palette

**Fabrics**  
GN593 Gemini Parchment,  
GN965 Gemini Flint,  
LC922 Lucy Dusk

**Paint**  
P02 Flint

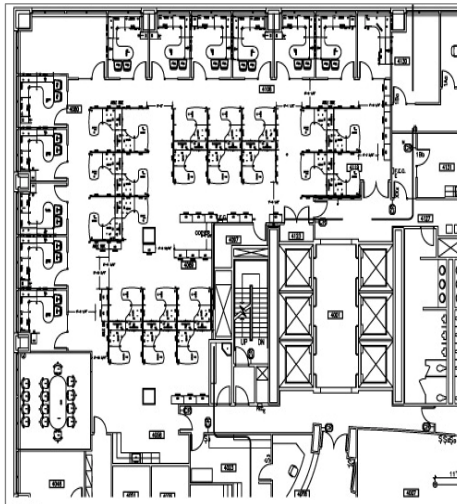
**Laminate**  
LT6A Camelstone

**Glass**  
Clear

**Landscape™ Surfaces**  
Mulberry Paper Mojave



## Terrace®, Reach™ Create Space at Software Company



This client writes software that converts hard copy documents to electronic files. Due to growth, they needed to remodel their workspace to add employees. Two key requirements were creating a new environment that encouraged more worker interaction and more storage space. Reach and Terrace combined to address the clients needs, all within the same space.

**Reasons for Success** In their old office, a common challenge was lack of storage for financial documents and not enough room to spread out lengthy reports. With Reach's storage integrated into the workstation walls, important reports are now always at workers fingertips. And, with no need for pedestals, employees can now utilize their entire worksurface. These increased efficiencies allowed them to move from an 8'x8' to 6'x7' accommodating more people in the same space.

As part of the new design, they also wanted to encourage additional interaction so some workers changed from private offices into open offices. Terrace made the transition smoother by creating a contemporary look and feel with its varied wall heights and materials such as glass and mesh. Feedback from employees is that the workspace is more efficient than their previous offices and has improved department teamwork due to the new layout.



*"Amazing job ... and the furniture looks great,"* said the client. Pleased with the dealer, Allsteel and their newfound efficiency, the client has designated Allsteel and Terrace as their new office standard.

*"We were able to help them achieve all their goals,"* said the Allsteel dealer. *"The end result also looks great and the people using the furniture love it."*

When office space is at a premium, Reach's unique storage capability combined with Terrace 2.6's thin panel widths, and its material versatility, offer the perfect solution.