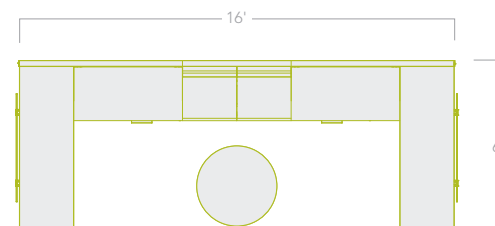


Allsteel®



involve™

TYPICAL ID: INV-T-002 09.11 | 6' X 8', 6' X 16'

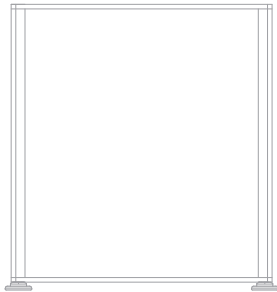




Privacy Screens



Project/Lateral with Open Cubby



Open Gable End

**Teamwork for Two or More**  
**TYPICAL ID: INV-T-002 09.11**  
**6' X 8', 6' X 16'**

From office mate to teammate, the turn of a chair makes the transition from focused work to collaboration effortless.

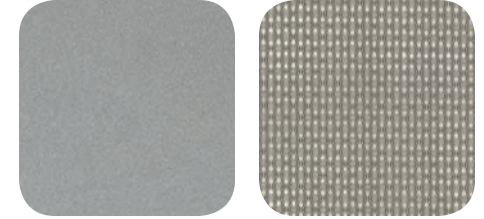
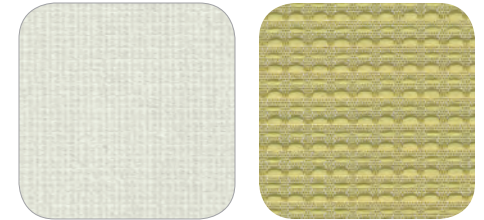
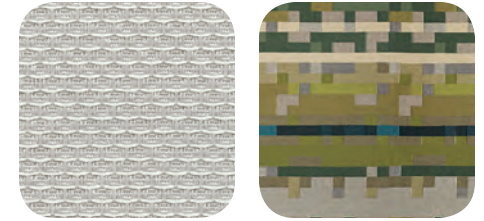
- Low credenzas offer open and closed storage, provide space for work tools, and serve as arm rests for visitors.
- Banquette separates the space, providing a comfortable area for additional team members to join the conversation.
- Stanchions on low credenzas create layered surfaces for piling.
- Glass screens remove distractions, provide easy access to co-workers, and create an open, inviting environment.
- Panel-mounted glass creates physical separation yet allows natural light to permeate the space.



**Learn more about Involve**

Use your smartphone to scan this EZcode or visit [allsteeloffice.com/involve](http://allsteeloffice.com/involve).

Go to [getscanlife.com](http://getscanlife.com) to download the app.



**COLUMN 1**

Panel fabric: Reflections Mistral  
 Laminate (edge): Silver Mesh (Loft)  
 Storage: Loft  
 Top trim/feet: Silver  
 Accent paint: Sprout

**COLUMN 2**

Soft seating: Maharam® Anagram Electric (COM)  
 Seating upholstery: Seed Lemon Balm  
 Mesh carrier (mesh): Mineral Grey (Pearl)  
 Frame finish: Mineral Grey

**Allsteel®**

Allsteel Inc.  
 Muscatine, Iowa 52761-5257  
[allsteeloffice.com](http://allsteeloffice.com)

Form # A8116 (10/11) Printed in USA

©2011 Allsteel Inc.  
 Allsteel is a registered trademark and Involve is a trademark. Maharam is a registered trademark.



This FSC-certified paper contains 10% post-consumer recycled content.