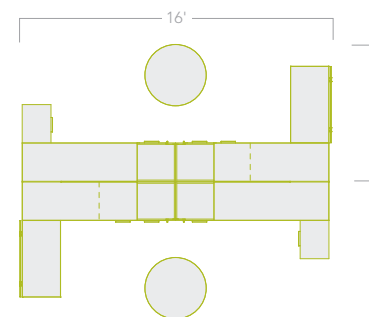


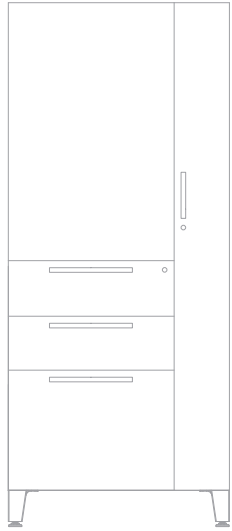
Allsteel®



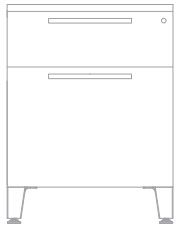
involve™

TYPICAL ID: INV-T-009 09.11 | 6' X 8' OR 6' X 16'





Side Access/Box/Box/
File/Wardrobe



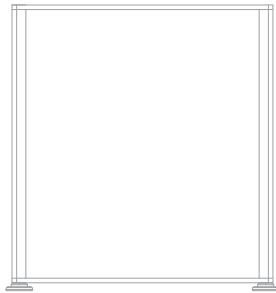
Box/File/Ped



Slider Credenza



Privacy Screen



Open Gable End

Supports Varying Tasks

TYPICAL ID: INV-T-009 09.11

6' X 8' OR 6' X 16'

Varying tasks are supported by a range of workspace options, from heads-down work to team interaction. Here, work function determines user orientation and storage requirements.

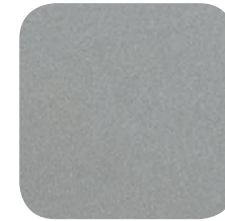
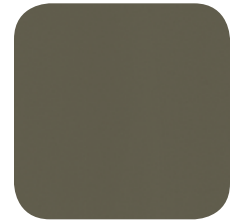
- Users easily share information by pulling up to the team table.
- Screens define space between users while providing visual privacy.
- Credenza cushion supports temporary guest seating.
- Sliding-door storage increases functionality of a small footprint without impeding the work area.



Learn more about Involve

Use your smartphone to scan this EZcode or visit allsteeloffice.com/involve.

Go to getscanlife.com to download the app.



COLUMN 1

Laminate and edge: Brazilwood

Storage: Frosty White

Top trim/feet: Silver

COLUMN 2

Seating upholstery: HBF® Grommet Limelight (COM)

Mesh carrier (mesh): Mineral Grey (Pearl)

Frame finish: Mineral Grey

Allsteel®

Allsteel Inc.
Muscatine, Iowa 52761-5257

allsteeloffice.com

Form # A8123 (10/11)

Printed in USA

©2011 Allsteel Inc.
Allsteel is a registered trademark and
Involve is a trademark. HBF is a registered
trademark.



This FSC-certified paper
contains 10% post-consumer
recycled content.